



PLASLOC

LLOCIn

INSTALLATION GUIDE

TOOLS AND MATERIALS REQUIRED FOR **LoCh** INSTALLATION

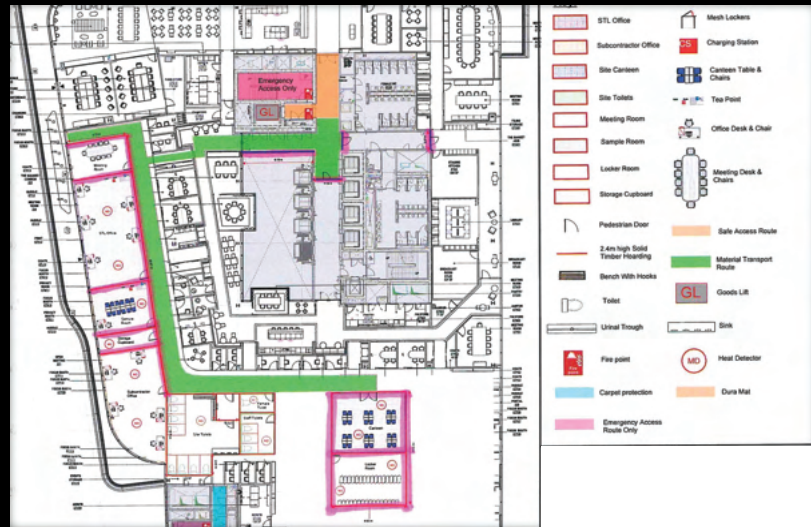
1. Saw
2. Mallet
3. Level
4. Tape Measure
5. Cordless Drill



To view all components for the LocIn installation please visit:

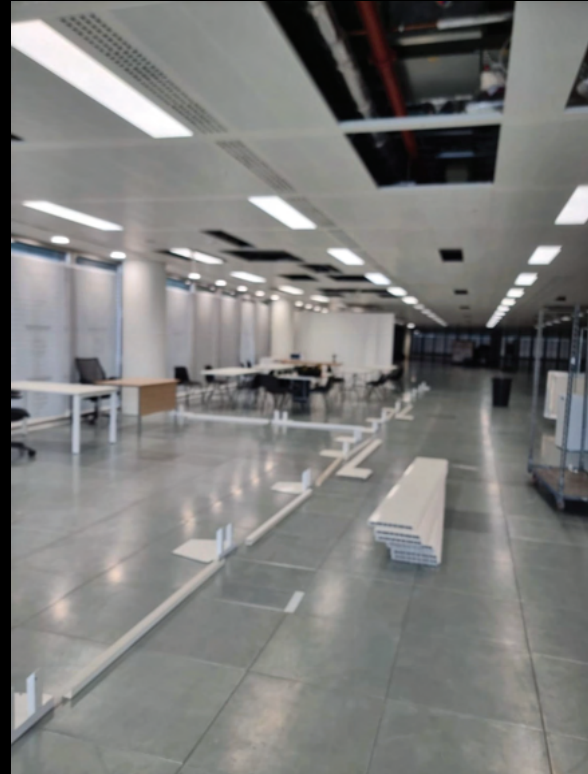
www.plas-shop.com/products/internal

1. Identify the proposed hoarding line and mark out with a removable medium (chalk line/string line etc).



2. Distribute required components along the proposed hoarding line.

2.1. Placing baseplates every 1.5m (pre-cut 5 board U track).



3. Fill Ballast Bottles from localised water source with hosepipe attachment to minimise risk of spillage.

3.1. Sand can be used if access to water is restricted.



4. Take a piece of U track and lay it on the male side of the board, to protect from the mallet.

4.1. Use the mallet and hit the u track – making your way down the length of the board so the male and female sides of the board click together.



5. Once you have two boards attached together – slide the two over the baseplate – ensuring the joint line of the panels sit central to the spigots.



6. Once you've added the boards to the baseplate you should have something that looks like this.

6.1. Add your filled ballast Bottle to the baseplate and attach the ballast bottle retaining bracket, using 25mm screws, to aid stability throughout the build.



7. Slide the S board U track under the existing board.

7.1. Line up your next board in the U track and use the mallet (starting from the bottom) to hammer it into the existing boards.

7.2. Continue laying S board U track and using baseplates at the end of each one.



8. Repeat steps 4 and 5.

8.1. Line up the board and slip onto the U track.

8.2. Use the mallet to hammer from the bottom and work your way up to click the boards together.

8.3. Add the ballast bottle and retaining bracket – repeat these steps relative to your hoarding.



9. For corners, just add the corner module and use the mallet to hammer it in to the standing boards (make sure it's connected the direction you wish the corner to go).

9.1. Continue with the boards, U track baseplates and Ballast bottles as usual.

9.2. Place the steel corner on the top to finish it off.



10. Slide your pre-fabricated door onto the existing boards – ensuring you have a ballast bottle either side of the door.

10.1. Place your pre-cut overdoor boards above the door and use the mallet to connect the male and female sides (as you did the boards).



10.2. Repeat steps 4 and 5 and add on the pre-cut notched door board onto the boards including baseplate.

10.3. Now slide the pre-cut notched door board attachment onto the door and continue with boards accordingly.



11. To finish off add the U channel along the top to tie it all together.



USEFUL CONTACTS

If you have any questions or concerns - please don't hesitate to call or drop us an email.

T: 01626 356995

E: admin@plasloc.com

W: WWW.PLASLOC.COM