



PLASLUC

LUCCLIP

INSTALLATION GUIDE

## TOOLS AND MATERIALS REQUIRED FOR **Lochin** INSTALLATION

---

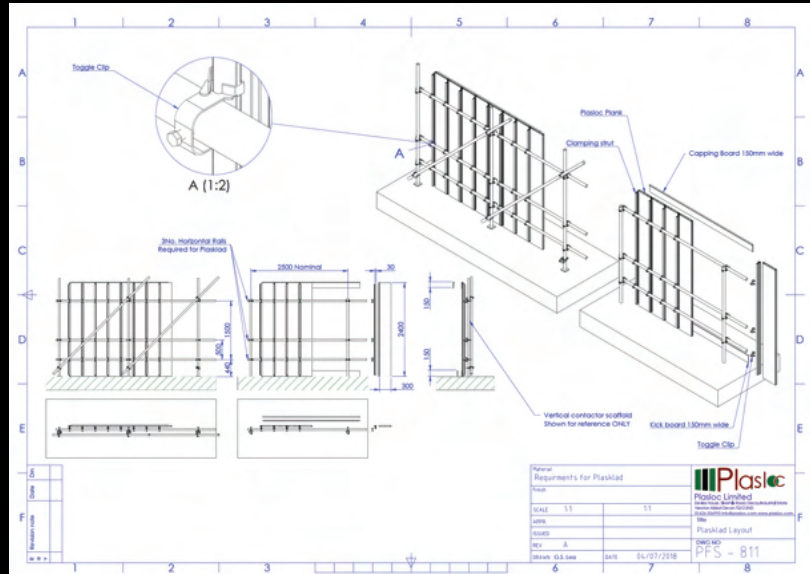
1. Saw
2. Mallet
3. Level
4. Tape Measure
5. Cordless Drill
6. 17mm Socket



To view all components for the LocClip installation please visit:

[www.plas-shop.com/products/external](http://www.plas-shop.com/products/external)

1. Opposite is the DWG identifying the heights of the ledgers required to secure the panels to.



**2.** Attach a spine to your scaffold using 3 clips with a 17mm spanner.

**2.1.** Place a board in line with the spine and tap it into place – making sure the male end is connecting to the female end.

**2.2.** Check level



**2.3.** Connect another spine to the other side of the board – making sure the female and male ends are connecting – clip to the scaffold.

**2.4.** Check level every 3rd board.



**3.** Attach your pre-cut notched door board to the end board.

**3.1.** Slide your pre-fabricated door onto the existing boards

**3.1.** Place your pre-cut overdoor boards above the door and use the mallet to connect the male and female sides (as you did the boards).

**3.2.** Continue with boards and spines accordingly.



**For Corners  
(with corner  
module):**

**4.** Place a corner module on the end of the board where you wish the corner to be taken.





**4.1.** Drill an adapted clamp strut on to a board – making sure it's in line with the ledger – attach to scaffold using a clip.

**4.2** Repeat steps 2-2.4



## For Corners (without corner module):

**4.** Place the male side of a board at 90 degrees onto the final board.

**4.1.** Attach a spine and use 3 clips to attach it the scaffold.

**4.2.** Level

**4.3.** On the corner, place the pre-cut capping and drill either side, from the top to the bottom.



## Kickers and Capping:

**6.** Place the kickers along the bottom and the capping along the top of your hoarding.

**6.1.** Drill to hold in place – making sure you screw into the spines NOT the boards.



## USEFUL CONTACTS

---

If you have any questions or concerns - please don't hesitate to call or drop us an email.

**T:** 01626 356995

**E:** [admin@plasloc.com](mailto:admin@plasloc.com)

**W:** [WWW.PLASLOC.COM](http://WWW.PLASLOC.COM)